



# HIGHlight

July 2010

## From the President...

Dear PSNM Friends —

Opportunities to enter art exhibits, join galleries, and compete in juried art shows abound in and around New Mexico - the only downside is that you have to save your best work to enter, there is normally some associated costs in dollars and/or time, and you have to be juried in or accepted by a gallery owner. I think it is the latter issue that prevents many people from taking the plunge. Rejection can be painful – an ego shattering experience. But, should it be?

First, I don't know of a single artist that hasn't been rejected (assuming they enter shows, etc.). Second, gallery owners know what they want and their rejection of your work frequently means in their eyes your work isn't a fit. And third, a quick story to make a point. I recently read an article in

## INSIDE...

pg 2 - Officers and Chairs, Member News  
pg 3 - Program Review  
pg 4 - Workshops  
pg 6 - Call for Entries

the NY Times entitled “What to think of the art of Pierre-Auguste Renoir?” Mary Cassatt after viewing Renoir's work said, “He is painting pictures of enormous red women with very small heads which are the most awful imaginable”. A few year later Henri Matisse saw the same pictures. He called them “the loveliest nudes ever painted”. The bottom line is that jurors and judges can have very diverse likes and dislikes - it is generally not a question of good or bad art, but rather personal opinion.

So go on! Make this the year you are going to plunge in and risk. Remember, the turtle can't get anywhere if he doesn't stick his neck out.

— Fred Miller

## Monthly Meeting at the Albuquerque Museum

Saturday, July 10 • 10 - Noon

### Turner to Cezanne Docent Led Tour

The docents of the Albuquerque Museum of Art and History will give a walking tour of the show, Turner to Cezanne: Masterpieces from the Davies Collection, National Museum Wales. The Davies Collection is an extraordinary group of nineteenth- and early twentieth-century paintings that is remarkable for its breadth and quality. The collection is exceptionally strong in Realist and Impressionist works and includes masterpieces by, among others, Cezanne, Daumier, Manet, Millet, Monet, Pissarro, Renoir, and Van Gogh. The exhibition is also a reminder of the value of creativity, and of persistence, as many of the artists were, at first, either misunderstood or scorned. Painters once rejected, like the Impressionists, are now in the pantheon of the world's most popular artists. The exhibition is organized by the American Federation of Arts and National Museum Wales and is supported by an indemnity from the Federal Council on the Arts and the Humanities.



*The Storm by Joseph M. W. Turner*

Coming Up... August 14 - Sarah Blumenschein

## PSNM Officers & Committee Chairs

President	Fred Miller
Vice President	Gwen Wilemon
Treasurer	Mack West
Secretary	Carol Lovelady
Past President	Elaine Koehler
Communications	Nicholas Tesluk
Corresponding Sec.	Judy Felsen
Evaluation	Lee McVey, Peggy Orbon Enid Sorenson
50/50	Ann Gladstone
Librarians	Linda Bonds, Panola Lisle
MasterWorks Rep	Peggy Orbon
Membership	Gaye Garrison
National Show	Beverly Snyder, Sally Prince
Newsletter	Marilyn Drake
Programs	Maryann McGraw
Program Review	Teri Gall
Publicity	VACANT
Refreshments	Constance Gehring
Signature Membership	Leila Hall
Website Manager	Marilyn Drake

\* To send emails to people on this list, go to [www.pastelsnm.org](http://www.pastelsnm.org) then click on Contacts.

## PSNM Shows

### 19th Annual National Pastel Painting Exhibition

Digital Entry Deadline: Saturday, August 14

Jury Notification Sent: September 14

For Prospectus go to:

[www.pastelsnm.org/main\\_html/national\\_show.htm](http://www.pastelsnm.org/main_html/national_show.htm)

#### **Facilities Volunteer Needed**

Contact Beverly Snyder, Show Chair  
[snyderpastels@peoplepc.com](mailto:snyderpastels@peoplepc.com)

### 2nd Annual Small Works Exhibit

Digital Entry Deadline: Saturday, August 31

Jury Notification Sent: September 30

For Prospectus go to:

[www.pastelsnm.org/main\\_html/small\\_works\\_show\\_app.htm](http://www.pastelsnm.org/main_html/small_works_show_app.htm)

Questions, Contact Enid Sorenson  
[enids@comcast.net](mailto:enids@comcast.net)

## Member News

**Paul Murray** has become the latest PSNM Distinguished Pastelist. Also, Paul was selected as the featured artist for the 2010 Vintage Albuquerque Fine Wine & Art Auction. His painting *Sunrise Virga*, which is valued at \$8,500, will be the highlight of the live auction on Saturday, June 26th. For details go to: [www.vintagealbuquerque.org](http://www.vintagealbuquerque.org)



**Dina Gregory** was invited to do a 2 woman show at the Bosque Art Center in Clifton, Tx. The opening reception was held on June 18th.

## Miscellaneous

**NM Artist Connection**, a website created to be a resource for New Mexico artists has information on galleries, calls for art, and artists' perspectives on the business side of art. [www.nmartistconnection.com](http://www.nmartistconnection.com) They want you to feel free to email anything about this site or, festivals, shows, classes or anything other artists might be interested in to: [info@nmartistconnection.com](mailto:info@nmartistconnection.com)

### Terry Ludwig Pastel Sale

Portrait Sets now 20% Off! Sales ends July 23, 2010

Working with an exclusive panel of noted portrait artists, Terry created an authoritative set of 60 portrait hues as an addition to his 30 piece Basic Portrait Set.

Basic Portrait Set - 30 pieces now \$72 (reg. \$90)

Portrait II Set - 60 pieces now \$140.80 (reg. \$176)

“Just the New” Portrait Colors - 18 pieces now \$45.60 (reg. \$57) - includes a bonus “stoplight green” stick

[www.terryludwig.com/portrait.html](http://www.terryludwig.com/portrait.html)

888-795-1232 (toll free - US only)

303-795-1232 (worldwide)

# June Program Review

by Teri Gall

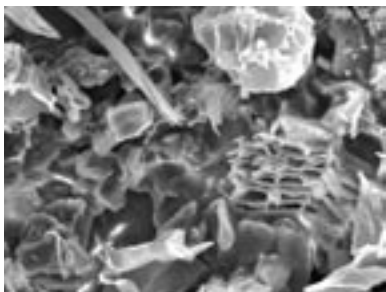
## The Texture of Pastel Surfaces: *A Closer Look*

“The work of an artist, more than any other professional, must be creative... Artists, as a class of professionals, are expected to continually produce new and refreshing images of dreams, scenes, and interpretations of life and it is their natural tendency to do so.” -Fred Yost

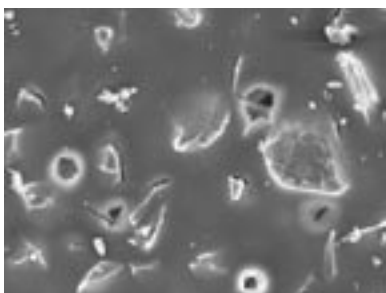
Fred is an artist who works in many mediums besides pastel. He has an alchemist’s curiosity about traditional mediums and tools, so it isn’t surprising that he investigated and came up with an analysis of the primary paper supports that we use in pastel painting. Using the right pastel surface for our particular style will showcase the medium put upon it. It is to this end that this information is critical.

Fred begins by stating that what he shows us will not make us better painters, but will make us more aware of the surface we’re painting on and the intrinsic influence that it might have. He credits the technical information which he is sharing, to Gary Chandler, of the NM Tech Engineering Department. NM Tech used an electron microscope at 500X magnification to enlarge the surface of the various surfaces. Each scan shown to us was the result of electrons being sprayed across each texture, culminating in a visual pattern on a 2D surface. Pastel surfaces were judged by 5 characteristics: Roughness, Pattern, Partitioning of Plane, Flow of Pastel, and Shapes on the Surface.

The brand names Fred covered are described because only some samples are shown in this review.



**La Carte:** A dramatic moonscape. Assorted shapes with irregular positioning. Rough, sharp texture.



**Wallis:** Wet or Dry, large areas of binder & conservative placement of grit. Good flow. Adequate roughness.

**Velour:** Appearance of droopy hair. Good flow.

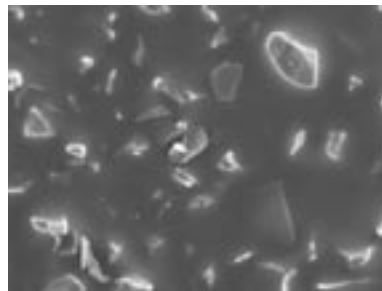
**Colourfix** by Art Spectrum: Crystalline structures, looks like small sharp shards of pottery. Irregular placement. Small sharp grit, but good performance.

**BFK Rives:** Smooth, with widely spaced, low, fibrous texture.

**Sabretooth** by the Saint-Armand Papermill in Canada: Crystal sizes are various, regular spacing, & rough texture.

**Mi-Teintes** by Canson: (Smooth side) looks fibrous, like human tissue. Partitioning shapes.

**UArt** (500 grit): Has a hard binder with sharp shapes, at regular intervals. Patterned.



*Commercial Sandpapers, purchased at hardware or home stores.*

**AH Sandpaper** (400 grit): Hard binder with sharp grit at regular intervals.

**Norton Sandpaper** (400 grit): Use wet or dry. Hard binder with sharp grit, regular. Intervals. Patterned.

The presentation became controversial when Fred compared expensive pastel surfaces to sandpapers which could be purchased from a hardware store or woodworking shop. Fred also gave us price comparisons per square foot. It’s obvious that sandpaper is going to be less expensive, compared to specialized pastel papers. Choose what is best for your painting style and wallet, but know that there are other choices out there including, with a good support, the customized surfaces that you can prepare and apply yourself. Some of these would be pumice or marble dust that you can mix into a binder or a purchased compound with grit included.

Fred Yost’s website is [www.fgyost.com](http://www.fgyost.com) You’ll enjoy looking at his art and reading his insightful commentary. His work is being shown locally at Corrales Bosque Gallery, and was shown at the Cancer Center in Albuquerque through June. He has been featured in the *Pastel Journal* and *The Collector’s Guide*. His email is: [fgyost@comcast.net](mailto:fgyost@comcast.net)

### **Editor’s Note:**

Dakota sells a sample packet of approximately 9” x 12” sheets of a variety of pastel papers which contains one sheet each of the following: Colourfix, SuperTooth, La Carte, Richeson, Sansfix, Sabretooth, Townsend, Uart, Velour, Wallis Professional, Wallis Belgian Grey and Wallis Museum. <http://www.dakotapastels.com>

For even more information about pastels and papers, go to this site: <http://www.squidoo.com/pastels>

*Photos courtesy of Fred Yost*

# Workshops

**LISTING POLICY:** All new announcements will be published with as much detail as space will allow. Repeat listings will be abbreviated. Deadline for submissions is 15th of month preceding next issue.

Please send your listings for classes, events, workshops, or news via email to: [psnm.news@gmail.com](mailto:psnm.news@gmail.com)

To find out about other workshops, shows, etc. check magazines and online sources. Use Google to search for additional information.

## TAUGHT BY PSNM MEMBERS

### Paul Murray Workshops

July 12 - 16 / September 27 - Oct. 1 • Taos, NM  
for the Taos Art School. [www.taosartschool.com](http://www.taosartschool.com)

### Mike Mahon Workshops

July 14 - 16 • Santa Fe, NM

Aug. 11 - 13 • Santa Fe, NM

Oct. 6 - 8 • Taos, NM

NM workshops are plein air. TX workshop is Portrait/ Draw & Paint. All of Mike's workshops emphasize the step-by-PROCESS of painting and are designed to help the artist maintain control of the painting, which makes painting more enjoyable, and ironically allows for more spontaneity! Details on Mike's website at: [www.mmahon.com](http://www.mmahon.com) Contact Mike by email: [art@mmahon.com](mailto:art@mmahon.com); phone: 505-473-1098

### Colette Ody Smith Workshop

Aug 9 - 11 • Fish Creek, WI

**Paint Like You Mean It: Expand Your Approach to Pastel**

Explore alternative approaches to pastel through discussion, reflection, experimentation, and newly found ways to apply pastels. For those comfortable with pastels, or whose experience in another medium will carry over into their exploration with pastels. See examples of Colette's work on her website: [www.coletteodya.smith.net](http://www.coletteodya.smith.net)

Workshop ID: PD1040 Tuition: \$345

Contact: Peninsula Art School, 920-868-3455 or [info@peninsulaartschool.com](mailto:info@peninsulaartschool.com)

### Jakki Kouffman Workshops

Master Pastellist, PSA; PAPNM, Signature Member

September 20 - 24 • Taos, NM

Details at [www.jakkikouffman.com](http://www.jakkikouffman.com)

email: [art@jakkikouffman.com](mailto:art@jakkikouffman.com) or call: 505-466-1800

### Lee McVey, PSA Workshop

October 1 - 3 • Edgewood, NM

3-day plein air class at Starlight Ranch. \$300 tuition, tax included. Lodging available at Starlight Ranch. Register at <http://starlightranchnm.com> 505-281-6839,

or email: [starlightranchnm@aol.com](mailto:starlightranchnm@aol.com)

For questions or more info, call Lee 505-884-5566 or

email: [lee@leemcvey.com](mailto:lee@leemcvey.com)

### Maggie Price, PSA Workshops

Both indoor and plein-air workshops; some combine both. Indoor classes designed to help create better paintings from photographic reference; outdoor classes specialize in plein-air techniques. Beginner to advanced.

October 1-11 • Juzcar, Spain

Stay in a tiny village at a lovely hotel and take day trips to surrounding villages and painting spots. Trips to larger cities (Ronda and Granada) round out the experience of Andalucia. For more information or to arrange a workshop in your area, contact Maggie at [pstudios@cableone.net](mailto:pstudios@cableone.net), 505-294-7752, or visit [www.MaggiePriceArt.com](http://www.MaggiePriceArt.com)

### Clive Tyler Workshops

November 2 - 4 • EXPO NM, Albuquerque

(Only 3 spots left!)

November 6 - 8 • The Artist Studio, Albuquerque

(Waiting List Only)

3-day classes with 2010 PSNM National Show judge. Lots of one-on-one attention, with many opportunities to review and implement design aspects necessary to create dynamic landscape paintings.

\$295 PSNM Members/ \$325 non-members

Deposit: \$100 due by July 15, Balance by September 1

To Register, email: [psnm.nswkshop@gmail.com](mailto:psnm.nswkshop@gmail.com)

### Terri Ford Workshops

Nov 6 - 8 • Roseburg, OR

In conjunction with the Pastel Society of Oregon's 17th Biennial Juried National Exhibition.

\$300 for PSO Members, \$350 for Non-Members.

Send to PSO, PO Box 105, Roseburg, OR 97470

Contact: Connie Noah: 541-673-7192 or

[connie@renoah.com](mailto:connie@renoah.com)

Terri also offers private instruction by appointment.

*continued on page 5*

## WORKSHOPS TAUGHT BY OTHERS

### Alicia Sotherland Workshop

August 23 - 27, 2010 • Killarney, IRELAND

4-day pastel workshop, focusing on portrait and figure painting. Special room rates offered at 4-star hotel, see: <http://www.lakehotel.com/>

Tuition: \$400 For more information about this and other workshops, contact: [aliciasotherland@hotmail.com](mailto:aliciasotherland@hotmail.com)

### Sally Strand Workshops

September 3 - 5 & 6 - 8, 2010 • Grand Junction, CO

Two 3-day workshops in conjunction with the Pastel Society of Colorado's 6th Annual Mile High International Exhibition. For workshop info email: [pencreasy@bresnan.net](mailto:pencreasy@bresnan.net)

### Lesley Rich Workshop

September 15 - 25, 2010 • Venice, ITALY

Plein air painting at San Marco and the Grand Canal, Burano, Murano and near the Rialto bridge. Stay in a small family owned hotel on a canal in the Dorsoduro region, with gondoliers passing by the terrace. \$1980 includes instruction, 10 nights lodging, daily breakfast, and taxes. Limited to 16 artists. For more information, go to: <http://lesleyrich.com/BrochureVenice2010.pdf>  
Email Lesley at: [lesley@lesleyrich.com](mailto:lesley@lesleyrich.com)

### Kewaunee Academy of Fine Art

Workshops • Kewaunee, WI

For more detailed information about summer workshops, please email [norma@kewauneeacademy.com](mailto:norma@kewauneeacademy.com) or call 920-388-4391.

### Dakota Art's LaConner Art Workshops

31 Years of Educating and Inspiring Artists!

Call Now to Register: 1-888-345-0067 ext. 5

[www.laconnerartworkshops.com](http://www.laconnerartworkshops.com)

## Call for Entries

*EDITOR'S NOTE: Please send an email with complete information about any shows that will be of interest to your fellow PSNM members to: [psnm.news@gmail.com](mailto:psnm.news@gmail.com) Submissions must be received by 15th of the month preceding the issue in which you'd like the show mentioned.*

*Remember, there are many shows and competitions listed on the internet, as well as the art magazines. So do some exploring on your own to see what is coming up. **To find out what ArtPerk currently has listed, go to:** <http://www.artperk.com>*

### Digital CD Deadline July 7, 2010

56th Juried Exhibition at The Haggin Museum

Sept. 2 - Oct. 31, 2010 at The Haggin Museum, Stockton, CA

Juror: Margot Schulzke

For more info contact Teresa Hickey at:

[elmhickey@sbcglobal.net](mailto:elmhickey@sbcglobal.net)

For entry forms, go to: [www.hagginmuseum.org](http://www.hagginmuseum.org)

### Digital Deadline July 9, 2010

Pastel Society of Colorado 6th Annual Mile High International Exhibition

Sept. 3 - 25, 2010 at Western Colorado Center for the Arts, Grand Junction, CO

Juror: Sally Strand

\$5000 cash and merchandise awards. Entry fee: \$15 per painting for PSC members. \$20 per painting non-members. For prospectus SASE to Penny Creasy 2177 Meadows Ct., Grand Junction, CO 81507 or email: [pencreasy@bresnan.net](mailto:pencreasy@bresnan.net)  
[www.pastelsocietyofcolorado.com](http://www.pastelsocietyofcolorado.com)

### Digital Deadline August 27, 2010

Pastel Society of Oregon 17th Biennial Juried National Exhibition

Nov. 5, 2010 - Jan. 7, 2011 at Umpqua Valley Arts Association, Roseburg, OR

Juror/Judge: Terri Ford

\$5000 cash awards and sponsor merchandise.

Entry fee: PSO members \$25/3images. Non- members \$35/3images. For prospectus, send SASE to Pastel Society of Oregon, PO Box 105, Roseburg, OR 97470 or email Lora Block at: [donandlora@hughes.net](mailto:donandlora@hughes.net)  
[www.pastelsocietyoforegon.com](http://www.pastelsocietyoforegon.com)