



PASTEL  
SOCIETY  
OF  
NEW  
MEXICO

MID

tone

June 2006

## From the President...

*If you jump, you discover something. If you jump with some landing place in mind, it doesn't count. It has to just be a jump.* — Keith Jarrett

Greetings, PSNM Friends —

It may seem premature to highlight August activities in the June newsletter, but the time will pass before we know it and it's not at all too soon to begin planning your participation. August will be a banner month for PSNM, with two shows opening almost simultaneously and showcasing the work of both our most accomplished and our newest members. The Albuquerque Museum is among the most prestigious venues in the state, and we are extremely fortunate to have the opportunity to exhibit our signature members' work there. We hope to have every one

of our 45 signature members represented in the Museum show. At the same time, the New Artists' Show at the Arts Alliance Gallery will give our less experienced members a chance to exhibit their work in a well known, attractive space. With both shows opening on the same weekend, the public will have the opportunity to view the work of a wide range of PSNM artists.

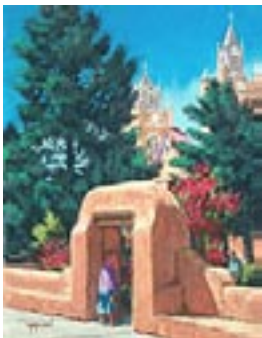
But, one of our members wrote, what about "us middlers,"—people who've had work accepted in one or more national shows but haven't yet accrued enough points for signature membership? A good point, and we certainly don't want to be guilty of falling into the overlooked middle-child syndrome. The writer suggested a Jury of Our Peers format—an excellent way for artists to experience the jurying process firsthand. Would someone step up to organize this? You'll have help!

—Betsy Greenlee

## Monthly Meeting at the Albuquerque Museum

Saturday, June 10, 10am

What is the "DiVine SETUP"?



**Mike Mahon** will explain during his landscape demo, on sanded paper, using a turpenoid and pastel wash underpainting. Learn how these seven fundamental principles help in the painting process and choosing what to paint. He will also discuss his step-by-step painting process, which is intended to assure a successful painting from the beginning, rather

than waiting until the last 20 minutes to see if it works. Mike developed this process from working under several great painters and combining their teaching with 30 years experience as a commercial illustrator and designer.

## PSNM New Artists' Show

July 28 to August 22

at the Arts Alliance Gallery

(in Fashion Square at Lomas and San Mateo)

Albuquerque, NM

New pastel painters, here's your chance to put your work out to an adoring public. Open to any PSNM members whose work has not been in one of our national shows, or any other juried show and who is not represented by a commercial gallery.

If you were not at the last meeting to sign up and would like to participate, please let Betsy Greenlee know, either via email ([psnm.pres@gmail.com](mailto:psnm.pres@gmail.com)) or telephone (898-8828).

# Upcoming Workshops & Calls for Entries...

## Deborah Paris Workshops

These intensive three and five day workshops will challenge and delight beginning plein air painters as well as those with experience painting outdoors. Plein air work will form the foundation for creating studio pieces from on location sketches, memory and imagination.

**Aug 31 - Sept 3, 2006** • Gig Harbor, WA. Northwest Pastel Society. For information or to register contact Paulette Johnson at 425-774-6785 or email [PJPastels@aol.com](mailto:PJPastels@aol.com).

**November 6 - 10, 2006** • Fredericksburg Artists School  
Beautiful fall weather in the Texas Hill Country. To register contact Bill Bush at 830-997-0515 or email [bush@fbartschool.com](mailto:bush@fbartschool.com).

## Nance McManus Workshops

**July 28 and 29** • Albuquerque - UNM Continuing Education  
PASTELS ARE PAINT...NOT CHALK! For more information e-mail Nance at: [nance@ringsteward.com](mailto:nance@ringsteward.com)

## Lorenzo Chavez Workshop

**October 2 - 6, 2006** • Taos, New Mexico  
Plein Air - Fechin Art Workshops - Tuition: \$475  
Paint outdoors everyday (weather permitting) working on location creating small field studies. For more information visit [www.fechin.com](http://www.fechin.com) or call (505)776-2622.

Lorenzo is a member of the NWR Artist Group and was a guest artist at the Plein Air Painters of America Show and the Albuquerque Museum Miniature Show. His work is featured in *Southwest Art*, *Art of the West* and the *Pastel Journal*. Please visit [www.lorenzochavez.com](http://www.lorenzochavez.com) for more information.

## Margot Schulzke Workshops

**October 8 - 13, 2006** • Soto's Sierra Retreat, Pollock Pines, CA  
Near South Lake Tahoe. Gorgeous fall color, walking distance from beautiful Sly Park Lake. Short distance to stunning Angora Lake. Maximum enrollment 15: lots of one-on-one instruction. All levels, design emphasis.  
Contact: [schulzke@jps.net](mailto:schulzke@jps.net). View the website at [www.margotschulzke.com](http://www.margotschulzke.com)

**February 11 - 17, 2007** • Hacienda Las Trancas, Mexico  
Near San Miguel de Allende. American owned and managed. Large, lavish rooms, lots of painting material on site, horse stables, side trips to San Miguel and Delores Hidalgo. Fly into Leon Airport; shuttle to Hacienda. Affordable. Contact Linda Roemisch, [artandsoul@hughes.net](mailto:artandsoul@hughes.net).

## Ann Templeton Workshops

**July 21 - 30, 2007** • Cambridge, England  
Many great painting venues can be found in this medieval village.

**August 10 - 20, 2008** • South Africa

South Africa offers many beautiful opportunities for plein air painting. During the workshop to take short tours to see the animals.

To secure your space, contact 505.378.2299 or [anntartseminars@yahoo.com](mailto:anntartseminars@yahoo.com)

For more complete information go to Ann's website: [www.anntempleton.com](http://www.anntempleton.com)

## Terri Ford, PSNM, PSA Workshop

**Oct 16, 17, 18 & 19, 2006** • Paris *en plein air*

4 days of plein air painting in this gorgeous city! Each day, Terri's demonstration and discussion will focus on composition, value approach to color thought process and the varying factors related to painting on location. Work at easels and plenty of individual attention will follow. Travel and lodging arrangements are up to you, but a great list of hotel and apartment recommendations is available. \$325.00 Tuition  
Call 408-286-3801 or email: [tford@terrifordart.com](mailto:tford@terrifordart.com)  
Complete information at [www.terrifordart.com](http://www.terrifordart.com)

## Pastel Society of North Florida

Slide Deadline July 3, 2006, Juried by Maggie Price.

9th Biennial National Exhibition, Sept. 10 - Oct. 12 Okaloosa Walton College Arts Center, Niceville, FL. For details and prospectus, send #10 SASE to Pastel Society of North Florida, PO Box 5133, Ft. Walton Beach, FL 32549 or go to [www.jimfew.home.mchsi.com](http://www.jimfew.home.mchsi.com)

## Maryland Pastel Society

Slide Deadline July 15, 2006

Juried by Duane Wakeham.

Annual "Shades of Pastel" National Exhibition, Sept. 9 - Jan. 31, 2007. Charles Sumner Museum, Washington, D.C. For details and prospectus, send #10 SASE to Lisa Mitchell, SOP Chair, 1415 Sparks Rd., Sparks, MD 21152 or, go to: [www.marylandpastelsociety.com](http://www.marylandpastelsociety.com)

## Degas Pastel Society

Slide Deadline Aug 12, 2006, Judged by Doug Dawson.

15th Biennial National Exhibition, Oct. 1 - 27. Placé St. Charles, New Orleans, LA. For details and prospectus, send #10 SASE to Kathy Daigle, DPS, 32 Cornerview Rd., Gonzales, LA 70737-6248, or go to [www.degaspastelsociety.org](http://www.degaspastelsociety.org)

## Ouray County Arts Association

Registration Deadline July 15, 2006, Judge Lee Johnson.

46th Annual Artists' Alpine Holiday, Aug. 4 - 12.

Details can be found at: [www.ourayarts.org/aah.html](http://www.ourayarts.org/aah.html)

Nancy Hawks will be taking paintings up to Ouray on July 26. Meet her at far west end of the parking lot, Smith's at Menaul and Carlisle. \$15 per painting. Call her for packing requirements: (505) 771-4931 or email her at: [Rnhteacher@aol.com](mailto:Rnhteacher@aol.com)

**NOTE:** To have your classes, workshops, events, or news listed in **HIGHlights**, the PSNM bi-monthly newsletter, please send information to **Alice Flitter** by the 15th of the month prior to publication.

Email: [awflitter@aol.com](mailto:awflitter@aol.com) Phone: 505-327-4300