



# HIGHlight

May 2010

## From the President...

Dear PSNM Friends —

Well, I finally gave in to the bone-on-bone pain caused by a loss of cartilage and had my ankle fused on of all days “April Fool’s Day”. I hope that’s not an omen. My orders are to remain on my back with foot propped up, hence I’ve had hours to contemplate my family room ceiling — if only I had really long handled brushes. As far as the fusion goes, I won’t know if it worked for another month or two. I just hope the two inch screws (2) and the three and a half inch screw (1) hold things together so the healing process can work. (The term “screw you” now takes on a whole new meaning for me.)

The pastel show circuit for this year is well underway. The MasterWorks Show, I am told, looks great. Congratulations to all who are in the show and to the award-winners. (See page 2 for a complete list.) The Signature Show is pretty much just waiting for the May 22 opening at the Millicent Rogers

## INSIDE...

pg 2 - Officers and Chairs, Member News

pg 3 - Program Review

pg 4 - Workshops

pg 6 - Call for Entries

Museum in Taos (see page 2 for details). The Small Works Show now has two PSNM Distinguished Pastelists to jury the show (waiting for a reply from the third). The Prospectus for the Small Works Show will be available soon. And lastly, the National Show is moving along on schedule and the accompanying workshops are almost completely filled. Look for the Prospectus being sent as an attachment along with this issue of the newsletter. It should also be posted on our website starting May 1. All of the above (not counting the ankle operation) is due totally to the many of you who have volunteered to make these shows great venues and opportunities for our members. Thanks to all!

— Fred Miller

## Monthly Meeting at the Albuquerque Museum

Saturday, May 8 • 10 - Noon

### Painting *en Plein Air* Demonstration

Santa Fe artist, **Mike Mahon**, specializes in portrait painting but loves painting landscapes, especially *plein air*. In his own painting as well as his workshops, he stresses the importance of understanding the basic principles of art as well as having a consistent step-by-step painting procedure. This is especially important in *plein air* work where time, subject matter, weather, etc., are so variable and unpredictable. A solid grounding in the basics and a strong painting procedure are the only things you may be able to depend upon. As Mike says, “The difference between studio and *plein air* painting is like the difference between swimming in a quiet indoor pool and swimming in the middle of the Atlantic Ocean.” During his “plein air-like” demo painting, Mike will discuss some of these basics and procedures, including the need to learn to think in “aesthetic categories”.

**Coming Up... June 12** - THE TEXTURE OF PASTEL SURFACES: A Closer Look  
presented by Fred Yost

## PSNM Officers & Committee Chairs

President	Fred Miller
Vice President	Gwen Wilemon
Treasurer	Mack West
Secretary	Carol Lovelady
Past President	Elaine Koehler
Communications	Nicholas Tesluk
Corresponding Sec.	Kathleen Dietz
Evaluation	Lee McVey, Peggy Orbon Enid Sorenson
50/50	Ann Gladstone
Librarians	Linda Bonds, Panola Lisle
MasterWorks Rep	Panola Lisle
Membership	Gaye Garrison
National Show	Beverly Snyder, Sally Prince
Newsletter	Marilyn Drake
Programs	Maryann McGraw
Program Review	Teri Gall
Publicity	VACANT
Refreshments	Constance Gehring
Signature Membership	Leila Hall
Website Manager	Marilyn Drake

\* To send emails to people on this list, go to [www.pastelsnm.org](http://www.pastelsnm.org) then click on Contacts.

## Signature Member News

### 2010 Signature Show

May 21 - June 27

Reception on Saturday, May 22 from 2 - 5 pm

#### Millicent Rogers Museum

1504 Millicent Rogers Road, Taos, NM

*Museum Open 7 days a week from 10 am - 5 pm*

[http://www.millicentrogers.org/museum\\_info1.htm](http://www.millicentrogers.org/museum_info1.htm)

**Sarah Blumenschein** and **Bud Edmondson** are our two newest Distinguished Pastellists. Congratulations!!

**Deborah Secor** has posted her book, *Landscape Painting in Pastels*, in blog format. This free online book can be seen at <http://landscapesinpastel.blogspot.com/>

**Paul Murray** reveals in the April 2010 issue of The Pastel Journal that risk-taking factored significantly into his jurying of the Landscape & Interior category of the 11th Annual Pastel 100 Competition.

## MasterWorks of New Mexico April 10 - 29, 2010

### Hispanic Arts Center, Expo NM

**FREE Pastel Demo by Doug Dawson**

**Sunday, April 25 at 9 am at Expo NM**

Thanks to all of the volunteers who helped to make the 2010 MasterWorks reception and show a success!

It was an educational and rewarding experience to be a part of this committee for the past two years and to see how three separate organizations can collaborate successfully to plan a show of this magnitude!

However, in order for this to happen again in 2011, PSNM will need one more representative, in addition to Peggy Orbon and Pam Lisle. Responsibilities include a monthly meeting at Barbara Lohbeck's home, giving input from PSNM, assisting in the planning of next year's show and organizing our 3-day workshop. Some of the 'perks' of the job are the gourmet lunches and making new friends from the other art organizations that comprise MasterWorks.

If you are interested and can attend the June meeting, please contact PSNM President, or one of the current PSNM Reps: Sharon Jensen, Panola Lisle, or Enid Sorenson.  
~ Sharon Jensen

### PSNM LARGE FINE ART AWARD WINNERS

1st Place – Bill Baker

2nd Place – Nancy Silvia

3rd Place – Lisa Hubbell

Honorable Mention – Sarah Blumenschein

Awards of Excellence – Denali Brooke, Sergio J. Viscoli

Creativity Award – Jakki Kouffman

*PSNM Award Winners in Other Categories*

Honorable Mention: Oil/Acrylic – Depy Adams

### MINIATURE FINE ART PASTEL AWARDS

1st Place – Sergio J. Viscoli

2nd Place – Leila Hall

3rd Place – Peggy Orbon

Honorable Mention – Jo Anne Kennedy, Elaine Koehler

(Perfect Juror Score - Sergio J. Viscoli)

*PSNM Award Winners in Other Categories*

1st Place/Acrylic – Paul Murray

Honorable Mention / Prints, Ink & Graphite –

Paul Murray; Watermedia – Judith M. Allen,

Bud Edmondson

**Total sales, as of April 23, are approx. \$20,000!**

Images of all large fine arts award winners are on the MasterWorks website: [www.masterworksnm.org](http://www.masterworksnm.org)

# April Program Review

by Teri Gall

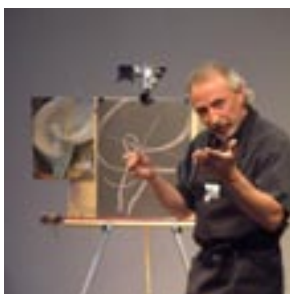
## Painting the Calla Lily

**Vasili (Bill) Katakis** is a Signature member of PSNM who brought his unique style, subject matter and methods to the April 13 presentation. In his own words, Bill has always been an artist, is a first generation Greek, and was raised around classical art. Consistent with the path he was born into, he studied at the American Art Academy of Art and the School of Art Institute of Chicago. He made a name for himself as both a commercial artist and cinematographer in Chicago. He has taught both art and film at Columbia College in Chicago. He continues to teach and paint today.

Bill's first love has always been painting and continuing on with that passion, he gifted us with a pastel demonstration of a calla lily "architectural" painting. He calls his botanical pieces architectural because he reduces the subject down to common geometric shapes as he is planning the composition and blocking out the flower's placement on the paper's surface. Identifying those shapes will inform him of shadow and light locations. Bill uses LaCarte paper with Sennelier and Rembrandt pastels.

The first step taken was to draw a sweeping angled line from the top to the bottom of the paper. The line will act as an axis, upon which to place his initial sketch. Without that line, he may not have petals

positioned correctly over the stem. He works every part of the paper, as he applies pastel, using only mid-range values. The background and subject come to life at the same time. Bill recommends that after the initial sketch of the subject, using photos or a model, put the reference material away and complete the painting from your intuition. Painting intuitively, questioning yourself throughout the process, will get you to a satisfactory conclusion much quicker than beginning a painting from the left brain and then switching over to the creative right brain when the work is 3/4 complete! As Bill adds pastel to the paper surface, he blends each application into the color that is already there. He blends with a rubber blender or his thumb. There are no loose pastel strokes on the surface of the painting. Even the incomplete work already looks like a fine-china surface.

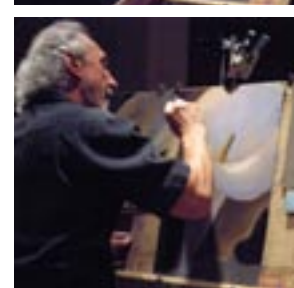
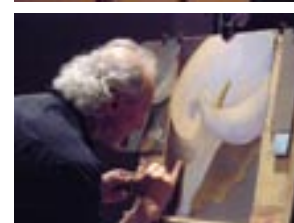


His blending is not haphazard. He blends in the direction of petal veins or leaf veins. He blends the background away from the subject, usually spending more time blending than applying pastel. He does not use fixative and he mixes warm and cool colors. He does not relegate hard pastels to the ground only.

When the painting looks complete, he brings in the final drama with dark shadows and highlights. He uses black for shadowing, blending it into mid-value pastels. Shadows also get blended in the direction that they fall. On petals, dark is blended in the direction of its shape. Highlights are added to accentuate sharp edges and the highest translucent areas. It's hard to follow a description of art making without an example in front of you. Go to Vasili's website to see examples of his work. [www.Vasiliart.com](http://www.Vasiliart.com)

In summary, Vasili's botanicals are their own category of art. Using his method, the painting will both reflect and absorb light. And because of the film *noir* reference that he gives them, they emit a light of their own.

Vasili is offering two, one-day workshops: May 1st "Botanical Basics" and May 2nd "Botanicals as Still Life". Details can be found on page 4 of this newsletter. For more information call 505-255-0313 or e-mail: [Vasiliart@aol.com](mailto:Vasiliart@aol.com)



*Photos courtesy of Cecilia McRoberts*



# Workshops

**LISTING POLICY:** All new announcements will be published with as much detail as space will allow. Repeat listings will be abbreviated. Deadline for submissions is 15th of month preceding next issue.

Please send your listings for classes, events, workshops, or news via email to: [psnm.news@gmail.com](mailto:psnm.news@gmail.com)

To find out about other workshops, shows, etc. check magazines and online sources. Use Google to search for additional information.

## TAUGHT BY PSNM MEMBERS

### **NEW!** Vasili Katakis Workshops

**May 1 • Botanical Basics**

**May 2 • The Botanical in Still-Life**

Albuquerque, NM • The Artist Studio, Hoffmantown Shopping Center at Wyoming and Menaul

Two separate pastel classes with demonstrations and hands-on instruction to meet the needs of each student.

Botanical Basics is beneficial to all levels, while the Still Life class involves more draftsmanship and lighting techniques. In both classes, emphasis will be given to shape, form and color.

\$100, for PSNM members / \$125 for non-members.

\$10 material fee. To register call 505-255-0313 or

email: [vasiliart@aol.com](mailto:vasiliart@aol.com)

### **NEW!** Deborah Secor Workshop

**May 8 - June 26 • Albuquerque, NM**

Saturdays, 9 - 12 pm at Harwood Art Studio

**Evocatively Painted Landscapes in Pastel**

See my pastel techniques and get a chance to be playful using your own style, while learning the process and furthering your experiments with soft pastels. You'll paint the landscape using photographs, mine or your own, and take a lighthearted approach to learning. Extensive subject-oriented demonstrations of sky, clouds, trees, mountains, shadows and reflections each week, followed by time at your easel to paint under my supervision. All levels welcome. Contact Harwood Art Center to enroll, 505-242-6367. <http://harwoodartcenter.org/ss/evocatively-painted-landscapes-in-pastel/>

### **NEW!** Sharon Jensen CNM Classes

**June 21 - Aug. 9 • Albuquerque, NM**

**The Brilliance of Soft Pastels**, Mondays, 1:30 - 4:00 at Manzano Mesa Center

**June 17 - July 29 • The Drama of Charcoal Drawings**, Thursdays, 1:30 - 3:20 at Montoya Campus

**June 18 - July 23 • Drawing from the Right Side of the Brain**, Fridays, 1:30 - 3:20 at Montoya Campus

For info, call Sharon at 505-323-7522 or CNM at 505-224-5243 or 505-224-5279 Senior Discounts for 65 and older.

### **NEW!** Fred Miller Workshop

**June 24 - 27 • Edgewood, NM**

**Portraits in Oil and Pastel** in the magnificent setting of Starlight Ranch. Painting in a variety of settings and lighting conditions will make your experience educational, challenging, and fun. Immersing yourself in painting for four days, will push you to a new level.

\$355 includes Lunch and Model fees. For details go to the Starlight Ranch website: [www.starlightranchnm.com](http://www.starlightranchnm.com) and/or call Fred at 505-450-7585.

### **Jakki Kouffman Workshops**

*Master Pastellist, PSA; PAPNM, Signature Member*

**May 9 - 13 • Abiquiu, NM**

**September 20 - 24 • Taos, NM**

Details at [www.jakkikouffman.com](http://www.jakkikouffman.com)

email: [art@jakkikouffman.com](mailto:art@jakkikouffman.com) or call: 505-466-1800

### **Paul Murray Workshops**

**May 10 - 14 • Santa Fe, NM**

Santa Fe School of Art. For information, go to [www.santafeschoolofart.com](http://www.santafeschoolofart.com)

**July 12 - 16 / September 27 - Oct. 1 • Taos, NM** for the Taos Art School. [www.taosartschool.com](http://www.taosartschool.com)

### **Marilyn Drake Workshop**

**May 13 - June 3 • Albuquerque, NM**

4 Thursdays, 1 - 4 pm at The Artist Studio, Hoffmantown Shopping Center at Wyoming and Menaul.

**Basic Figure Drawing**, including proper proportions, how to measure, foreshortening and contouring of form. \$110, including tax. To register call 505-400-2571 or email: [marilyndrake@comcast.net](mailto:marilyndrake@comcast.net)

### **Mike Mahon Workshops**

**May 12 - 14 • Rio Rancho, NM**

Space still available. Paint along the Rio Grande, with cottonwoods and Albuquerque's Sandia Mountain in the background.

**June 10 - 12 • Amarillo, TX**

**July 14 - 16 • Santa Fe, NM**

**Aug. 11 - 13 • Santa Fe, NM**

**Oct. 6 - 8 • Taos, NM**

*continued on page 5*

NM workshops are plein air. TX workshop is Portrait/ Draw & Paint. All of Mike's workshops emphasize the step-by-PROCESS of painting and are designed to help the artist maintain control of the painting, which makes painting more enjoyable, and ironically allows for more spontaneity! Details on Mike's website at: [www.mmahon.com](http://www.mmahon.com) Contact Mike by email: [art@mmahon.com](mailto:art@mmahon.com); phone: 505-473-1098

### **Nance McManus Workshops**

**May 15 & 16** • Albuquerque, NM  
"PASTEL CAMP" 2-day intensive class at the New Mexico Art League. For more information, go to: [www.newmexicoartleague.org/mcmanus\\_pastel\\_camp.htm](http://www.newmexicoartleague.org/mcmanus_pastel_camp.htm)

### **Maggie Price, PSA Workshops**

Both indoor and plein-air workshops; some combine both. Indoor classes designed to help create better paintings from photographic reference; outdoor classes specialize in plein-air techniques. Beginner to advanced.  
**May 28 - 30** • Denver, CO

Indoor, technique-intensive to boost your pastel skills at Ludwig Studios in Littleton.

**June 7 - 11** • Pollock Pines, CA

Plein air painting in the foothills of the Sierras, along a spectacular river and other nearby locations.

**October 1-11** • Juzcar, Spain

Stay in a tiny village at a lovely hotel and take day trips to surrounding villages and painting spots. Trips to larger cities (Ronda and Granada) round out the experience of Andalucia. For more information or to arrange a workshop in your area, contact Maggie at [pcstudios@cablone.net](mailto:pcstudios@cablone.net), 505-294-7752, or visit [www.MaggiePriceArt.com](http://www.MaggiePriceArt.com)

### **Terri Ford Workshops**

**June 1 - 10** • South of France

In the gorgeous Lot Valley. Beautiful landscapes, vineyards, charming villages. Learn more at: [www.terrifordart.com/SouthofFranceWorkshop.html](http://www.terrifordart.com/SouthofFranceWorkshop.html) Space still available. Contact Terri at 408-286-3801 or email [tford@terrifordart.com](mailto:tford@terrifordart.com)

**Nov 6 - 8** • Roseburg, OR

In conjunction with the Pastel Society of Oregon's 17th Biennial Juried National Exhibition.

\$300 for PSO Members, \$350 for Non-Members.

Send to PSO, PO Box 105, Roseburg, OR 97470

Contact: Connie Noah: 541-673-7192 or [connie@renoah.com](mailto:connie@renoah.com)

Terri also offers private instruction by appointment.

### **Colette Oद्या Smith Workshop**

**Aug 9 - 11** • Fish Creek, WI

**Paint Like You Mean It: Expand Your Approach to Pastel**

Explore alternative approaches to pastel through discussion, reflection, experimentation, and newly found ways to apply pastels. For those comfortable with pastels, or whose experience in another medium will carry over into their exploration with pastels. See examples of Colette's work on her website: [www.coletteodya.smith.net](http://www.coletteodya.smith.net)  
Workshop ID: PD1040 Tuition: \$345

Contact: Peninsula Art School, 920-868-3455 or [info@peninsulaartschool.com](mailto:info@peninsulaartschool.com)

### **Lee McVey, PSA Workshop**

**October 1 - 3** • Edgewood, NM

3-day plein air class at Starlight Ranch. \$300 tuition, tax included. Lodging available at Starlight Ranch. Register at <http://starlightranchnm.com> 505-281-6839, or email: [starlightranchnm@aol.com](mailto:starlightranchnm@aol.com)

For questions or more info, call Lee 505-884-5566 or email: [lee@leemcvey.com](mailto:lee@leemcvey.com)

### **Clive Tyler Workshops**

**November 2 - 4** • EXPO NM, Albuquerque

**November 6 - 8** • The Artist Studio, Albuquerque

3-day classes with 2010 PSNM National Show judge. Lots of one-on-one attention, with many opportunities to review and implement design aspects necessary to create dynamic landscape paintings.

\$295 PSNM Members/ \$325 non-members

Deposit: \$100 due by July 15, Balance by September 1  
To Register, email: [psnm.nswkshop@gmail.com](mailto:psnm.nswkshop@gmail.com)

---

## **TAUGHT BY OTHERS**

### **NEW! Doug Dawson Workshop**

**June 10 & 11** • Ridgway, Ouray County, CO

**Studio Landscape Pastel** for Weehawken

Weehawken Creative Arts Members: \$275 if enrolled and paid by, or before, June 1 / \$300 after June 1.

Non-Members: \$300 if enrolled and paid by, or before, June 1 / \$325 after June 1. For more information, to register, or for a student supply list, visit [www.weehawkenarts.org](http://www.weehawkenarts.org) or by call 970-318-0150.

### **Alicia Sotherland Workshop**

**August 23 - 27, 2010** • Killarney, IRELAND

4-day pastel workshop, focusing on portrait and figure painting. Special room rates offered at 4-star hotel, see: <http://www.lakehotel.com/>

Tuition: \$400 For more information about this and other workshops, contact: [aliciasotherland@hotmail.com](mailto:aliciasotherland@hotmail.com)

## Sally Strand Workshops

September 3 - 5 & 6 - 8, 2010 • Grand Junction, CO

Two 3-day workshops in conjunction with the Pastel Society of Colorado's 6th Annual Mile High International Exhibition. For workshop info email: [pencreasy@bresnan.net](mailto:pencreasy@bresnan.net)

## Lesley Rich Workshop

September 15 - 25, 2010 • Venice, ITALY

Plein air painting at San Marco and the Grand Canal, Burano, Murano and near the Rialto bridge. Stay in a small family owned hotel on a canal in the Dorsoduro region, with gondoliers passing by the terrace. \$1980 includes instruction, 10 nights lodging, daily breakfast, and taxes. Limited to 16 artists. For more information, go to: <http://lesleyrich.com/BrochureVenice2010.pdf>  
Email Lesley at: [lesley@lesleyrich.com](mailto:lesley@lesleyrich.com)

## Kewaunee Academy of Fine Art

Workshops • Kewaunee, WI

For more detailed information about summer workshops, please email [norma@kewauneeacademy.com](mailto:norma@kewauneeacademy.com) or call 920-388-4391.

## Dakota Art's LaConner Art Workshops

31 Years of Educating and Inspiring Artists!

Call Now to Register: 1-888-345-0067 ext. 5

[www.laconnerartworkshops.com](http://www.laconnerartworkshops.com)

## Call for Entries

*EDITOR'S NOTE: Please send an email with complete information about any shows that will be of interest to your fellow PSNM members to: [psnm.news@gmail.com](mailto:psnm.news@gmail.com)  
Submissions must be received by 15th of the month preceding the issue in which you'd like the show mentioned.*

*Remember, there are many shows and competitions listed on the internet, as well as the art magazines. So do some exploring on your own to see what is coming up. **To find out what ArtPerk currently has listed, go to:**  
<http://www.artperk.com>*

### Application Deadline: May 1, 2010

**Placitas Artists Series • Sept - June**

Here is your opportunity to show locally. For 23 years, the Placitas Artists Series has been bringing excellent music and art to Placitas at the beautiful Las Placitas Presbyterian Church. Four (4) visual artists have a month long show, in conjunction with musical concerts. To be considered, go to: [www.placitasarts.org](http://www.placitasarts.org) and download a Visual Arts Application Form, or send SASE to Judith Roderick, 72 Overlook Dr., Placitas, NM, 87043

### Digital Deadline: May 3, 2010

**MidAmerica Pastel Society - 2nd National Open Exhibition**

Aug. 26 - Sept. 25, 2010 in Merriam, KS

Juror/Judge: Lorenzo Chavez

Download prospectus at: [www.midamericapastel.org](http://www.midamericapastel.org)  
Lorenzo Chavez Workshops in conjunction with show:  
Aug. 23 - 25 & Aug. 27 - 28, 2010

### Digital/Slide Deadline June 12, 2010

**25th Bosque Art Classic**

Sept. 11 - 26 at Bosque Arts Center, Clifton, TX

Judge: John Coleman

Online info & entry form at: [www.bosqueartscenter.org](http://www.bosqueartscenter.org)  
For Prospectus: SASE to Art Classic, Box 502, Clifton, TX 76634; or e-mail: [art@bosqueconservatory.com](mailto:art@bosqueconservatory.com)

### Digital CD Deadline July 7, 2010

**56th Juried Exhibition at The Haggin Museum**

Sept. 2 - Oct. 31, 2010 at The Haggin Museum, Stockton, CA

Juror: Margot Schulzke

For more info contact Teresa Hickey at:

[elmhickey@sbcglobal.net](mailto:elmhickey@sbcglobal.net)

For entry forms, go to: [www.hagginmuseum.org](http://www.hagginmuseum.org)

*continued on page 7*

## Reminders

**Email Notification:** All PSNM Members who provided their email addresses when they joined or renewed for 2010 have been added to the Google Groups email recipient list, unless they requested otherwise.

If you change your email address, it is your responsibility to notify Gaye Garrison, Membership Committee Chair. She will then pass the information along so you will continue to receive the newsletter and other notices via email.

**Website Link:** Thanks to all who have sent their images and link information for the June update of the Member Artists page on the PSNM website. If you paid for this feature and have not yet sent your information, please do so by May 15th. Image submission requirements must be followed.  
Send Email to: [psnm.webmanager@gmail.com](mailto:psnm.webmanager@gmail.com)



## Digital Deadline July 9, 2010

### Pastel Society of Colorado 6th Annual Mile High International Exhibition

Sept. 3 - 25, 2010 at Western Colorado Center for the Arts, Grand Junction, CO

Juror: Sally Strand

\$5000 cash and merchandise awards. Entry fee: \$15 per painting for PSC members. \$20 per painting non-members. For prospectus SASE to Penny Creasy 2177 Meadows Ct., Grand Junction, CO 81507 or email: [pencreasy@bresnan.net](mailto:pencreasy@bresnan.net)  
[www.pastelsocietyofcolorado.com](http://www.pastelsocietyofcolorado.com)

## Digital Deadline August 27, 2010

### Pastel Society of Oregon 17th Biennial Juried National Exhibition

Nov. 5, 2010 - Jan. 7, 2011 at Umpqua Valley Arts Association, Roseburg, OR

Juror/Judge: Terri Ford

\$5000 cash awards and sponsor merchandise.

Entry fee: PSO members \$25/3images. Non- members \$35/3images. For prospectus, send SASE to Pastel Society of Oregon, PO Box 105, Roseburg, OR 97470 or email Lora Block at: [donandlora@hughes.net](mailto:donandlora@hughes.net)  
[www.pastelsocietyoforegon.com](http://www.pastelsocietyoforegon.com)

## Creative Spark Challenges

Stuck in a creative slump? Put that zing back into your pastel paintings with the "Creative Spark" challenge, an interactive column from [Artistnetwork.com](http://Artistnetwork.com)

Send in your work, and you could win a fabulous prize from The Pastel Journal or one of their sponsors. Take a look at some of the previous challenges and winners for inspiration at: <http://www.artistsnetwork.com/article/creative-spark>. Plus, see the editors' other favorite entries on Pastel Journal blog - <http://pastelblog.artistsnetwork.com/SearchView.aspx?q=creative%20spark>



## Odds & Ends

### New Mexico Committee of the National Museum of Women in the Arts

The New Mexico Committee of the National Museum of Women in the Arts has a new webstie and they invite you to browse through it and enjoy the new look. Read all about their history and Mission, see upcoming events, and check out photos from past events (maybe you'll see yourself!), join them on Facebook or Twitter, and link over to the National Museum of Women in The Arts website in Washington D.C.

More at: [www.NewMexicoWomenInTheArts.org](http://www.NewMexicoWomenInTheArts.org)

**Lorraine Plaxico**, a member of the Appalachian Pastel Society in Asheville, NC. is very interested in seeing the Southwest and painting the earth tones and dramatic landscapes in pastels. She is researching house swapping and sent this information to PSNM to see if any of our members might be interested in a swap for 1-3 weeks. Realistically it may be September or October before she can make this happen, but she is also considering late May and early June. She'd love to be near the country vs in town, but is open.

Asheville is located in the Blue Ridge Mountains and has some of the loveliest streams, waterfalls, fields, and mountain views you can imagine. It is a small town, often compared to Sedona with its population of artists and musicians and its cultural activities. The Biltmore House and Gardens which draw tourists from all over the world and the historic Grove Park Inn are only two.

Lorraine lives 17 miles north of town, a few miles off the interstate, in a scenic rural valley with barns and cattle. (See photos at left) Her house is tucked away up on the ridge, with untouched forest behind me and a view of the valley from her deck. She has a two bedroom, two bath house which could appcommodate 1 - 4 people –no smokers and no children please. The studio space with large windows, a huge deck and a screened porch with hammock and rocking chairs, perfect for listening to the birds. Since she has a cat, so those with allergies wouldn't work out. The cat is sociable, not to the point of being a lap cat, and adapts well to company. She'd love for someone to feed her twice a day and water the plants once a week.

See Lorraine's paintings at:

[www.womensartspace.com/lorraineplaxico/index.html](http://www.womensartspace.com/lorraineplaxico/index.html)

Contact Lorraine by phone at 828-645-8785 or email: [lpaxico@charter.net](mailto:lpaxico@charter.net)